

# Draper FlexShade Order Form — Manual FlexShade

<b>Charge To (Dealer/Acct. #):</b>	<b>Ship to:</b> <small>(required)</small>	<b>Facility Name:</b>	<b>For Dealer Use</b>
		<b>Attention:</b>	<b>Order Date:</b>
		<b>Address:</b>	<b>P.O. #:</b>
		<b>City/State/Zip:</b>	<b>Tag / Job #:</b>
		<b>Phone:</b>	<b>Draper Quote #:</b>

<b>Select Manual FlexShade Options</b>	<b>Optional Hardware:</b> <input type="checkbox"/> Pocket Headbox <input type="checkbox"/> Surface Mount Headbox <input type="checkbox"/> Fascia with EndCaps:   Square or Radius <i>(Radius available for small hardware only)</i>	
	<b>Fascia / Headbox Color:</b> <input type="checkbox"/> Clear Anodized (Standard) <input type="checkbox"/> Bronze <input type="checkbox"/> White <input type="checkbox"/> Black <input type="checkbox"/> Ivory <input type="checkbox"/> Fabric Wrapped	
	<b>Clutch Color:</b> <input type="checkbox"/> White <input type="checkbox"/> Black	<b>Bead Chain:</b> <input type="checkbox"/> Stainless Steel (Standard) <input type="checkbox"/> Ivory Polyester <input type="checkbox"/> White Polyester <input type="checkbox"/> Black Polyester <input type="checkbox"/> Brown Polyester <input type="checkbox"/> Grey Polyester
<b>Optional Spring Loaded Bead Chain Hold Down:</b> <input type="checkbox"/> Yes <input type="checkbox"/> No		

ROOM/ LOC.	QUANTITY	MEASURE (CHECK ONE)		DIMENSIONS (INCHES) Min. Width: 6"		Fabric Number & Color (Type or Style)	CLUTCH LOCATION (CHECK ONE)		UNIT PRICE	EXTENSION
		IM*	CM*	Width	Exact Height		L	R <small>(standard)</small>		

**Notes on ordering Motorized Flexshades:**  
**Don't forget your controls.**  
 \*IM - Inside Measure. Draper makes a 1/8" deduction.  
 \*CM - Cloth Measure. Measurements shown are the overall dimensions of the shade fabric.  
 Draper will add to those dimensions to include brackets or endcaps.  
 Clutch location determined by viewing shade from inside the room. **Right side standard.**  
 Orders with fascia are automatically furnished with endcaps instead of brackets.  
 Aluminum slat encased in heat sealed hem.  
 Optional Spring-Assist for bead chain clutch available on large shades. Contact Draper.  
 Hardware size at Draper's discretion depending on size of shades ordered. If hardware size is critical, consult Draper before ordering.  
 For "Exact Height" please include any shade hardware in measurement.  
 Bead chain is 6" shorter than fabric length.  
 Shades furnished standard with "P-Clip" Bead Chain Hold Down attached to chain.

**email: AV@draperinc.com   fax: (866) 637-5612**

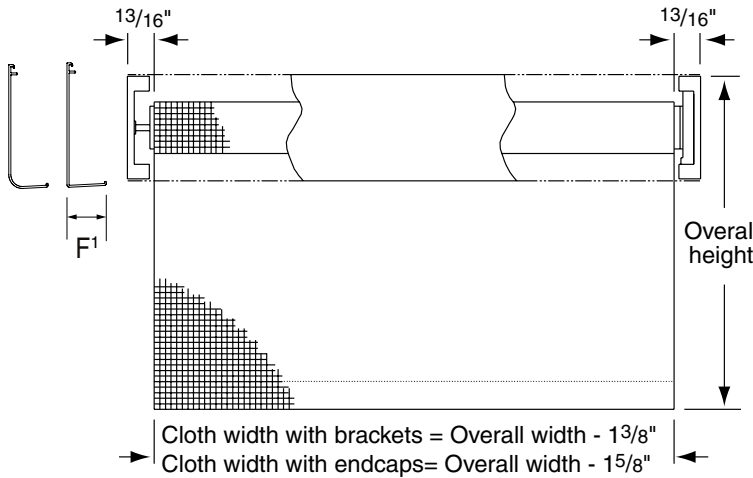
**Special Instructions:**

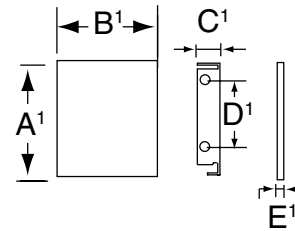
**Signature:**

# Manual FlexShade

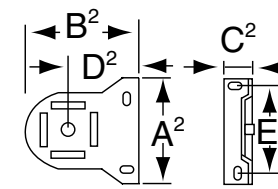
## Dimensions



## Mounting Bracket/Endcap Dimensions



	Headbox with Endcaps		Fascia with Endcaps	
	Small	Large	Small	Large
A <sup>1</sup>	3 <sup>5</sup> / <sub>16</sub> "	4 <sup>11</sup> / <sub>16</sub> "	3 <sup>7</sup> / <sub>8</sub> "	4 <sup>5</sup> / <sub>8</sub> "
B <sup>1</sup>	3 <sup>7</sup> / <sub>16</sub> "	4 <sup>11</sup> / <sub>16</sub> "	3 <sup>3</sup> / <sub>8</sub> "	4 <sup>5</sup> / <sub>8</sub> "
C <sup>1</sup>	5 <sup>5</sup> / <sub>8</sub> "	5 <sup>5</sup> / <sub>8</sub> "	5 <sup>5</sup> / <sub>8</sub> "	5 <sup>5</sup> / <sub>8</sub> "
D <sup>1</sup>	2"	3 <sup>1</sup> / <sub>4</sub> "	2"	3 <sup>1</sup> / <sub>4</sub> "
E <sup>1</sup>	1 <sup>1</sup> / <sub>16</sub> "	3 <sup>3</sup> / <sub>32</sub> "	1 <sup>1</sup> / <sub>16</sub> "	3 <sup>3</sup> / <sub>32</sub> "
F <sup>1</sup>	1 <sup>3</sup> / <sub>16</sub> "	1 <sup>9</sup> / <sub>16</sub> "	1 <sup>3</sup> / <sub>16</sub> "	1 <sup>9</sup> / <sub>16</sub> "



	Brackets*	
	Small	Large
A <sup>2</sup>	2 <sup>3</sup> / <sub>16</sub> "	2 <sup>3</sup> / <sub>16</sub> "
B <sup>2</sup>	2 <sup>3</sup> / <sub>8</sub> "	3"
C <sup>2</sup>	1 <sup>1</sup> / <sub>16</sub> "	1 <sup>1</sup> / <sub>16</sub> "
D <sup>2</sup>	1 <sup>5</sup> / <sub>8</sub> "	2 <sup>1</sup> / <sub>4</sub> "
E <sup>2</sup>	1 <sup>3</sup> / <sub>4</sub> "	1 <sup>3</sup> / <sub>4</sub> "
F <sup>2</sup>	N/A	N/A

Above dimensions based upon 20 lb. clutch and 1/2" diameter roller. \*Small brackets are supplied with #10 and #20 clutch. Large bracket optionally available at Draper's discretion. For #24 clutch, contact Draper for dimensions.

## Measuring for Manual FlexShades

Manual FlexShades are custom fabricated for each opening, and must be measured accurately.

- Determine the area to be covered and decide where brackets or endcaps will be attached.
- Be careful to allow for any irregularity which will interfere with the proper operation of the unit (i.e. handles, irregular trim, locks or opening not square and plumb).

### Inside Measure - IM

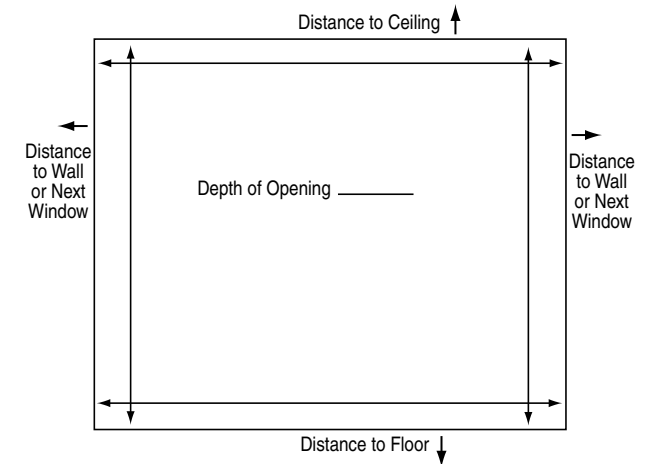
You will provide the exact width and height of the window opening, and we will make the product so that the shade unit—including hardware—is that width. Remember, that means the cloth will be slightly narrower than the window opening, and there will be light leakage around the sides of the shade.

Measure the window width at three positions—top, center, and bottom. Send Draper the exact width at the window opening's narrowest point. Don't make any deductions for brackets or mounting. Next, measure the height of the opening, also in three positions—left, center, and right—and provide Draper with the exact height at the window opening's shortest point. Again, do not make any deductions—Draper will take care of that based on the hardware used.

### Cloth Measure - CM

Measure the window width at three positions—top, center, and bottom. Send Draper the exact width at the window opening's narrowest point. Measure the height of the opening, also in three positions—left, center, and right—and provide Draper with the exact height at the window opening's tallest point.

You may wish to add a little to the width and height measurements to create some overlap, giving you more privacy and allowing less light to leak from around the edges. Add two to three inches on each side. If there's no protruding sill, add two to three inches at the bottom as well. Add three inches to the top to account for the mounting hardware. The overall width of the hardware will be greater than the measurement you send us. How much wider depends on the product.



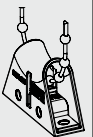
### Safety Note for Bead Chain Clutch Shades

**Please Note: Draper Clutch FlexShades do not comply with WMCA/ANSI Standard A100.1-2012 as standard. This is what Draper does should you wish your shades to comply with the standard:**

- ① Pre-installed spring loaded chain tensioned device with bead chain threaded through it.
- ② Approved permanent warning label attached.
- ③ Approved mechanical fasteners included.

For more information, visit

<http://www.draperinc.com/WindowShades/WCMACompliance.asp>



# DRAPER

411 S. Pearl St., Spiceland, IN 47385 USA ■ 765-987-7999  
www.draperinc.com ■ fax 765-987-7142

Copyright © 2016 Draper Inc. Form AV\_ManualFlexShade\_OrderForm16 Printed in U.S.A.